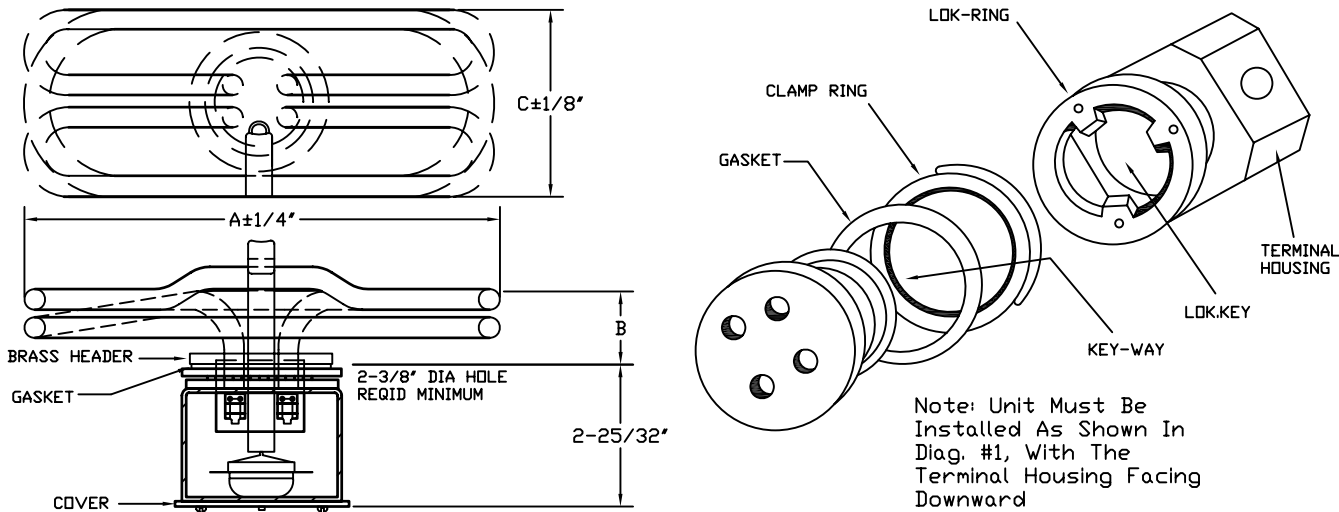




MODEL HE -CT INSTALLATION INSTRUCTIONS FOR HE URN HEATER CUT-OUT (CT) QUIK-LOK TYPE

The QUIK-LOK header construction is designed for rapid-simplified Installation. The only tools required are a screwdriver a hex-driver. The clamp assembly is the peripheral type. All clamping parts are located outside the terminal bundle so as not to interfere with the actual wiring of the device.

Diagram #1--Std.4" Octagon Conduit Box



1. As received, remove terminal cover, loosen the (3) slotted head lok-screws and terminal housing to line up the lok-keys with the key-ways. Remove first the **terminal housing & clamp-ring** subassembly. Leave the gasket and cutout in place.
2. Install heater with gasket through hole in container. The unit is designed for 2-7/16 dia, hole with wall thickness up to 101"(1/2"thick by special request).
3. Install the **clamp-ring** then lok-ring terminal housing sub-assembly by pushing lok-keys on over the key-ways and rotating housing to hold it in place.
4. With a hex-driver, tighten the (3) slotted hex head lok-screws, proceeding clockwise until screws are evenly tightened.

NOTE: Do Not Adjust The (2) Round Head Screws Used To Hold The Lok-Ring To Terminal Housing

